



Case Locator on CD-ROM

User Guide Including Installation Procedures

This electronic version combines Manupatra's leading product with the power of **FAST NXT SOLO** the industry's leading search and retrieval software to provide advanced, versatile searching and personalization tools.

- Each judgment appears as a **Single Document**
- Each judgment has a **Customized Template** giving the salient details of each judgment such as appeal no, title of the case, date of decision, prior history etc. wherever applicable
- **Equivalent Citation** to multiple print journals for easy reference
- **Seamless Navigation** with a split view which lets you move from one section to

another or from one court to another without losing track of your document.

- You may **Search in One or Many or any Permutation of Courts and Years**. Eg you may run your query in 5 years of SC data, 2 years of Delhi HC data and more.
- **Search Across Multiple Courts** simultaneously without having to insert different CD ROM's each time
- For the first time you can view the entire **Table of Cases** for each single year, with hyperlinks which take you directly to the respective case.
- **Copy & Paste** option available (limited)

INDEX

1. System requirements	4
2. Dongle/Hardware Lock	5
3. Installation of Case Locator	6
4. Installing Updates and Additional Products	9
5. Starting the Program	10
6. Using the Frames	11
7. Search	15
a. Legal Search	15
b. MANU Search	21
c. Viewing Search Results	26
d. Save Searches	29
8. View Text of the Central Act While Reading the Judgment	30
9. View the Judgment Referred through hyperlink	32
10. Index	32
11. Copy and Paste	33
12. Page Setup	33
13. Printing	35
14. Terms and Conditions of Use	36

**M
A
N
U
P
A
T
R
A**

System Requirements

To install and run Case Locator on CD-ROM, a computer system should meet or exceed the following specifications:

PC TYPE - Intel Pentium IV 350 MHZ or higher recommended

BROWSER - Internet Explorer 5.x or higher

OPERATING SYSTEM - Microsoft Windows XP/2000 (Genuine Software)

RAM - 512 MB or more

CD ROM SPEED - 32X or faster

SCREEN RESOLUTION -Best viewed in (800*600 or 1024*768)

PORT - Printer/USB

A mouse or other Microsoft-compatible pointing device is highly recommended, though not required.

JAVA - A CD containing JAVA has been sent to you with initial installation. Alternately you may download it from <http://www.manupatra.com/asp/SUPPORTCENTER.aspx>

Dongle/Hardware Lock

Case Locator uses the dongle/hardware lock for authentication. Thus to access Manupatra Case Locator products, dongle needs to be inserted at the right port.

There are two types of Dongle Type: Printer Port Dongle and USB Port Dongle.

If the dongle is not in place and you are trying to access the CD database, it will show you the following error

'HASP NOT FOUND'


Installation of Case Locator

To install *Case Locator on CD-ROM*, follow the steps outlined below:

1. Start Microsoft Windows
2. Insert the *CD-ROM* disc into the CD-ROM drive
3. Click on the **Start** button
4. Select **Run**
5. At the Open line type **D:\SETUP**. Use D or another letter corresponding to the CD-ROM drive as appropriate.
6. Click **OK**. This will lead to the Case Locator Setup program (Fig 1). To begin the installation, move the mouse and click on the Next button in the set up window.

Alternately

1. Go to My Computer on your desktop
2. Click on CD Drive

3. Click on Icon 
setup.exe

4. This will lead to the Case Locator Setup program (Fig 1). To begin the installation, move the mouse and click on the **Next** button in the set up window.

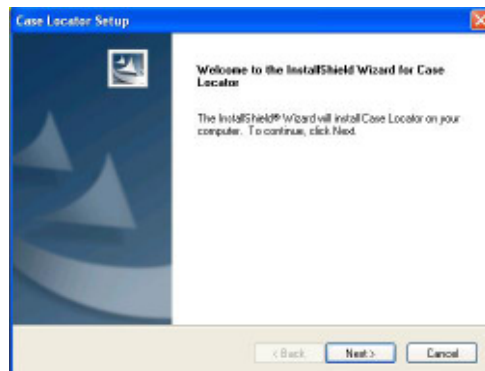


Fig. 1

- Please read the **Terms and Conditions** of Use.
 - Click **YES** to proceed, if you accept the Terms and Conditions.
 - If you select '**NO**' the set up will close.
- The setup program will then allow users to specify the folder (directory) in which to install

the Case Locator. The program will create a default path (C:\Program Files\Manupatra CD) unless you choose to Browse and specify the location at which to install the Case Locator.

- After choosing options, click **Next** and then click on **Install** to complete the Setup.
- Case Locator configures your new software installation
- The installation wizard will prompt you the Library/ Content Install Path

The setup program allows users to specify the folder (directory) in which to install the Libraries/Content. The program will create a default path (C:\Program Files\Manupatra CD\Content) unless you choose to Browse and specify the location at which to install the Libraries/Content.

Once you have chosen the option, installing the libraries may take a few minutes (Fig. 2).



Fig. 2

- Click on FINISH to end the installation.

Installing Updates and Additional Products

MISCELLANEOUS

When you install Case Locator products, the libraries/ content resides on your PC. Thus after the initial installation you do not require the physical CD to access the database.

UPDATES

When you get updates (monthly/quarterly), the new update comes only with the incremental data. You need to simply insert the CD in the CD ROM drive and click on the SETUP icon to copy the new files.

You may approach the SETUP icon either through **My Computer** or through **Start > Run** option. The program automatically appends the new files to the respective location for you to access. Set up starts to copy the infobases/content and prompts you to wait.

When you buy ADDITIONAL CASE LOCATOR PRODUCTS/ COURTS run the following procedure to install the new products. Once the installation is complete, the new product

gets added automatically to your LEFT content frame. From the table of content frame in your left pane you can seamlessly navigate across various products without having to insert different CD ROM's each time.

You need to simply insert the CD in the CD ROM drive and click on the SETUP icon to copy the new files. You may approach the SETUP icon either through My Computer or through Start > Run option. The program automatically appends the new files to the respective location for you to access.

Starting the Program

To begin using the Case Locator you have 2 options: The set up automatically creates a

SHORTCUT on your desktop



Simply

click on the Manupatra Case Locator Icon to start your session.

OR

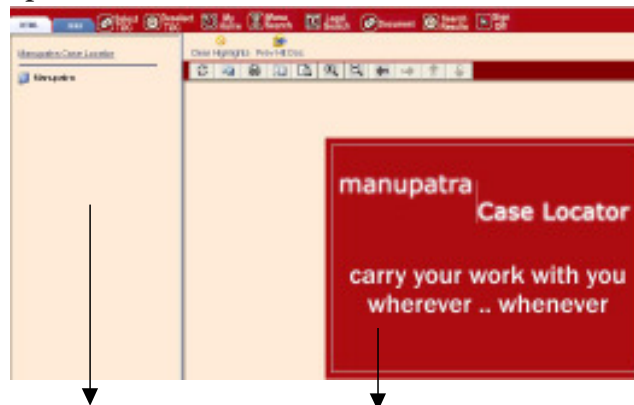
Click on the Windows **Start** button, move the mouse pointer to **Programs**, then to

Manupatra on the cascading menu that appears to the right. On the next cascading menu, click on **Case Locator** and on next cascading menu on **View Content**.

Using the Frames

DEFAULT SCREEN

Top Frame



Left Frame

Right Frame

The **Left Frame** contains the Table of Content. The Table of content contains the Court names

and list of Years. Headings may be collapsed or expanded individually with the mouse by clicking on the + and - icons.

The main text/document appears in the **Right Frame**. Every heading in the table of contents is linked to the corresponding heading in the main text in the Right Frame.

With the mouse, click on a node/folder in the left frame (Court Name or Year) to display the corresponding section in the right frame.

Check boxes appear in the left frame, located to the left side of the Court Name or Year. Choose **Select TOC** if no check boxes appear by default. Check boxes allow Search to be performed on selected sections of database. For example, clicking on the check box 1995 of Supreme Court can restrict a search to contents of the selected heading.

The **Top Frame** contains the following Icons:



HTML - Allows you to navigate one node/heading at a time.

JAVA - Recommended. Gives you a tree view. You can expand/ collapse all nodes/headings simultaneously without losing track of where you were. A JAVA TOC helps you to search across multiple domains simultaneously.

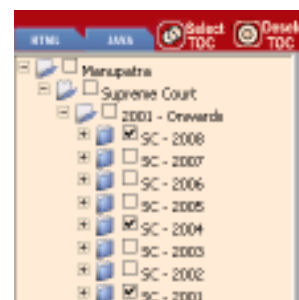
SELECT TOC -

Check boxes will appear to enable a user to select /define the Court and or year where they want to search



DESELECT TOC -

The check boxes are removed and user can browse the documents through respective indexes



MY HOME - Takes you back to the default page

MANU SEARCH - Explained below

LEGAL SEARCH - Explained below

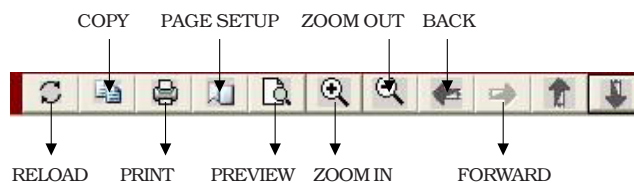
DOCUMENT - Takes you to the last document viewed

SEARCH RESULTS - Takes you to listing of your last search results.

SIGN OFF - Click on this button to end your session and close the Case Locator



The Previous Match or Next Match buttons allow rapid navigation between hits in the current open document.

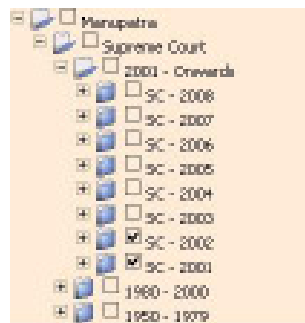


Search

LEGAL SEARCH

This interface assists you in your search for Judgments.

- Select the combination of court/year you want to search in from the table of contents in left frame, by checking the respective box.



- You can search either on subject field or any one parameter along with the subject field.

SUBJECT

- Select a subject from the drop down menu
- Check the Apply Subject box
- You may also specify a sub-subject, which may be word or a phrase.
- Click on Search to get results
- E.g. Select 'Arbitration' as subject and specify 'appointment of arbitrator' as sub-subject. Check the Apply Subject box and click on search.

DATE - Search for cases for a particular period or for a specific date

- Select the date option 'on', 'before', 'after', 'range', 'last'
- Specify day, month year from drop down menu.

- Check the Apply Date box
- Click on search to get results

Appellant /Respondent - Search for a case by appellant or respondents name

Appellant/Respondent

- Type unique appellant/respondent name
- Avoid common words (Mr, Mrs, Dr, Board etc.)
- Avoid words which may be abbreviated (Limited, Company etc)

JUDGES - Search for cases delivered by a specific judge

Judges

- Type the name of judge in the judges field
- Avoid initials

CITATION SEARCH - Search for a case with an Equivalent Citation

CITATION SEARCH

Publisher	<input type="text" value="BLR"/>	<input type="button" value="v"/>
Enter Year	<input type="text" value="1995"/>	Volume Number <input type="text" value="1"/>
Page Number	<input type="text" value="152"/>	Court <input type="text" value="Bom"/>
<input type="button" value="Search"/>		

- To get unique result specify all components of the publisher's citation
- Select the publisher from the drop down menu
- Specify the Year,-. Volume no (if applicable), Page No and Select the court from drop down menu
- In case you do not specify all of the above components, your query may yield multiple results that match the components specified.

OTHER CITATION SEARCH

OTHER CITATION SEARCH

Other Citations

- In case the publisher whose citation you are looking for is not listed in the drop down menu, please type the citation in the Text box to search.
- Ensure the syntax /mode of citation is right.

MANUPATRA CITATION SEARCH

MANUPATRA CITATION SEARCH

MANU/ No. Year

- Search for text of judgment if you have the Manupatra citation.
- Select the Court name from drop down menu.
- Enter the unique judgment number
- Enter the Year

CASE NOTE SEARCH

CASENOTE SEARCH

Text to search

- This allows you to restrict your search only to the Case Note of a judgment instead of the full text of judgment
- This search is restricted to those judgments which have Case Notes. Judgments which do not have a point of law do not have Case Notes.

JUDGMENT UNDER BARE ACT

JUDGMENT UNDER BARE ACT

Bare Act

Section/Article/Order

- Type the Act name in the Bare Act field
- Enter the section number on which the cases are required
- Avoid using the full act name incase the name of the Act is long. Try and type key words, eg Arbitration Act for Arbitration and Conciliation Act

- Avoid abbreviation used for the Act name
e.g. type Civil Procedure Code instead
of CPC

MANU SEARCH

This interface will help you to search for key words, phrases, multiple phrases and combination of words & phrases. Manu search by default is a Boolean search. You also have the option of using "near each other" and 'containing all words'.

Type in your query in the text box

Select the Operators (and: or: not: etc)

Click on Search

Manu Search

Please select "Java TOG" for selecting multiple domain, while searching.

This interface will assist you to search for key words, phrases, multiple phrases and more. * Select the combination of court/year you want to search in from the table of contents.

Query terms: "annual general meeting" and tax

Containing all words Near each other Boolean Search
([Boolean Search Tips](#))

And key in your search word(s) and select one or more operators

BOOLEAN OPERATORS

Operator	Example	Result
word *Plural matching is not automatic *Case insensitive	BAREACTS	Returns all documents containing that word. Note that plural words are not matched with singular words automatically (and vice versa). Words and Phrases are case insensitive. So "bareacts" is the same as "Bareacts" or "BAREACTS".
Phrase *Use quotes for phrase search.	"M.C. Mehta"	Returns all documents containing that phrase. Note that quotes are necessary. For example "crime" and "Income tax" (with the quotes) searches for that exact phrase. Without quotes the search will be for all documents with crime that also contain the word income and tax (the three words not necessarily appearing next to each other).

And	*Copyright AND "Bare Acts" *one two	Returns all documents that contain both the first term and the second term. A "term" can be a single word or complete phrase
*Document may have both words (or both phrases)	*one & two	Only works when your search is set to Boolean Mode.
*Can be written "AND" or "and"	*one and two	

* Synonyms: &, +

OR	*criminal OR Tax *me you *me or you	Finds documents with either 'me' or 'you'. In other words, Returns all documents that contain either the first term or the second term or both. A "term" can be a single word or complete phrase.
*Document can have either word (or either phrase)		Only works when your search is set to Boolean Mode.
*Can be written "OR" or "or"		
*Synonyms: comma		

Not	*1996 NOT 1995 *^him	Finds documents that contain the first word, but do not contain the second.
* Document		

must, have first term. Must not have second	*not him	Occasionally useful to exclude irrelevant documents that contain unique works in Boolean Mode. In other words, Finds documents that don't contain 'him'.
*Can be written words or titles.	Only	
"NOT"		
or "not"		
Exclusive or	*apples ~ oranges	Finds documents with either 'apples' or 'oranges', but not both. omit all punctuation
punctuation	*apples x or oranges [] { } ^ + - ,	
* Replace all punctuation with a space in searches		in your searches by replacing them with spaces to give you specific result
* Only use double quotes for phrases that contain operators		

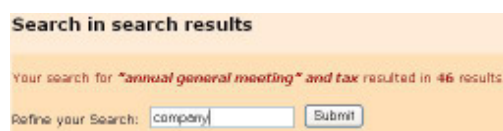
Single character wildcard	*wom?n *th??	Finds documents with 'woman', 'women', etc., or 'this', that', 'them', etc.
Multiple character wildcard	*a*n *work*	Finds documents with 'an', 'addition', 'assign', etc., or 'work', 'works', 'working', etc.
Ordered proximity	"corporate tax law"/10	Finds documents with 'corporate', 'tax' and 'law' within 10 words, in the order given.
Unordered proximity	"technical resource acquisition" @ 5	Finds documents with 'technical', 'resource' and 'acquisition' within 5 words, in any order.
Stemming (word form)	run%25	Finds documents with 'run', 'ran', 'runs', and 'running'.
Synonym	alert%24	Finds documents with 'alert', 'active', 'aware', 'quick', etc.

VIEWING SEARCH RESULTS

Following is a typical screen shot of how Search results appear.



- 1 Search in Search Results** - this interface helps you to narrow down your search. First search on judge name yielded 176 results. The same is being narrowed down to give results on Company from the 176 results.



2 Toggle search View allows you to see both the search results and the text of selected document within the same frame. To disable toggle view click on the Toggle View icon again.



3 Document Excerpts allows you to see x no of words (5 in small, 10 in medium and 20 in long) appearing to the left and right of your search words/query in the search results screen. This allows you to get an idea of the document (context in which

search words are being used) before opening the same. Choosing Case Note from the drop down allows you to see the case note of the judgments appearing in the search results without opening the judgment.

4 Title and date of decision of judgments appearing with hyperlinks.

5 Save Searches - explained below

Whenever search results are 100 or more 100, it automatically prompts whether user wishes to further narrow down the search. If user selects Yes it pops up a screen where user can type a query within the searched results. But in case user selects Cancel, entire list of results is shown on the screen.



SAVE SEARCHES

Case Locator provides you the option of saving your searches for future reference. Give the search result a name "Save search as" on Search results page by which you may recognize the search at a future date.



When you click on Manage Saved Searches, it will show you the list of your searches saved (Fig 5)

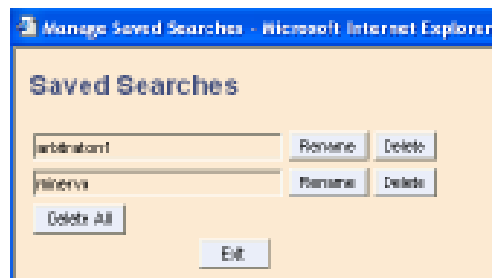


Fig 5

When you have Saved searches, the next time you start a session an icon of Saved Searches appears in the top bar (Fig 6)



Fig 6

Clicking on saved searches enables you to view the searches saved during previous sessions by giving you a drop down to choose from. (Fig 7)

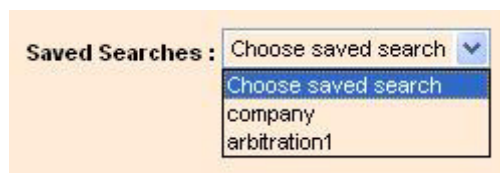


Fig 7

View Text of the Central Act While Reading the Judgment

Manupatra brings you the convenience of reading the text of the section of an Act which appears in the body of the judgment by simply clicking on the section no.

In following example by clicking on Article 136 of Constitution of India you can read the text of the Article 136 directly.

CONSTITUTION OF INDIA

Article 136 - Special leave to appeal by the Supreme Court

(1) Not with standing anything in this Chapter, the Supreme Court may, in its discretion, grant special leave to appeal from any judgment, decree, determination, sentence or order in any cause or matter passed or made by any court or tribunal in the territory of India.

(2) Nothing in clause (1) shall apply to any judgment, determination, sentence or order passed or made by any court or tribunal constituted by or under any law relating to the armed Forces.

Disposition:
Petition dismissed

ORDER

Page 3655

1. In this special leave petition the Petitioner has impugned the judgment and order of the High Court of Bombay at Goa dated February 22, 2006 in Civil Writ Petition No.19 of 2005, whereby it dismissed the Writ Petition filed by the Petitioner praying that its proposal contained in letter dated January 18, 2005 be considered and that Respondent No. 1, herein, be restrained from selling the assets in question to Respondent No. 3.

2. We have heard counsel for the parties at length. We have carefully perused the material placed before us. We are satisfied that this is not a fit case for interference by this Court in exercise of its discretionary jurisdiction under Article 136 of the Constitution of India.

It is not disputed that the Petitioner had committed defaults in payment of **Page 3656** dues to Respondent No. 1. Action was taken under Section 23 of the State Financial Corporation Act by the aforesaid respondent. The property in question was attached and possession was also taken by Respondent No. 1. The property known as Falcon Retreat is a hotel. Thereafter, Respondent No. 1 made efforts to put the property to sale by auction. Seven such attempts were made, but either on account of non-availability of purchaser or on account of postponement of the auction on the request of the Petitioner.

View the Judgment referred through hyperlink

Judgments appearing within text of judgment are hyperlinked enabling you to directly view the judgment without searching for the same. In following example by clicking on MANU/SC/ 0187/1971 you can directly view the judgment of State of Andhra Pradesh v. P.V.Narayana referred to in the judgment.

Special Judge might have taken a back seat and the statements of other sons of the respondent, namely, D.W.3 and D.W.4 might not have been ignored by the learned Special Judge. The courts are obliged to go into the question of prejudice of the accused when the main investigation is concluded without a valid sanction. (See [State of Andhra Pradesh v. P.V. Narayana](#) [MANU/SC/0187/1971](#)). It is true that only on the basis of the illegal investigation a proceeding may not be quashed unless miscarriage of justice is shown, but, in this case, as we have noticed hereinbefore, the respondent had suffered miscarriage of justice as the investigation made by P.W.41 was not fair.

11. The learned Trial Judge furthermore also committed a serious error in so far as he failed to take into consideration that Shri Debaraj Panda, who examined himself as P.W.37, being a Senior Divisional Operations Manager, was not competent to accord

Index

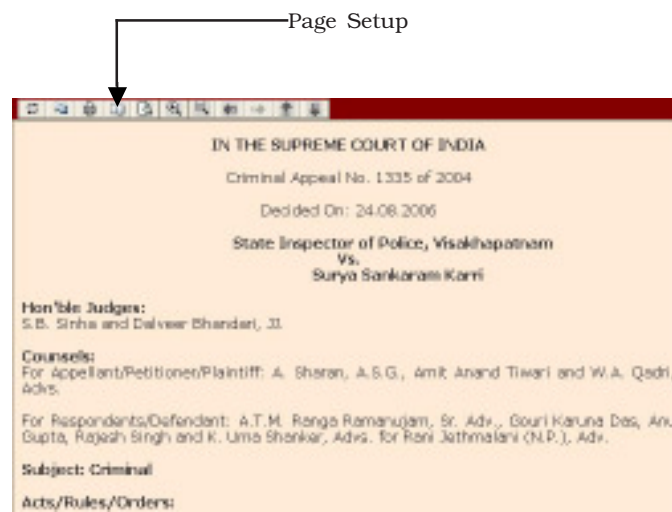
Chronological Index It displays the chronological list of judgments arranged date wise i.e the latest judgements is displayed first.

Nominal Index : it displays the list of judgments sorted alphabetically on the name of appellent.

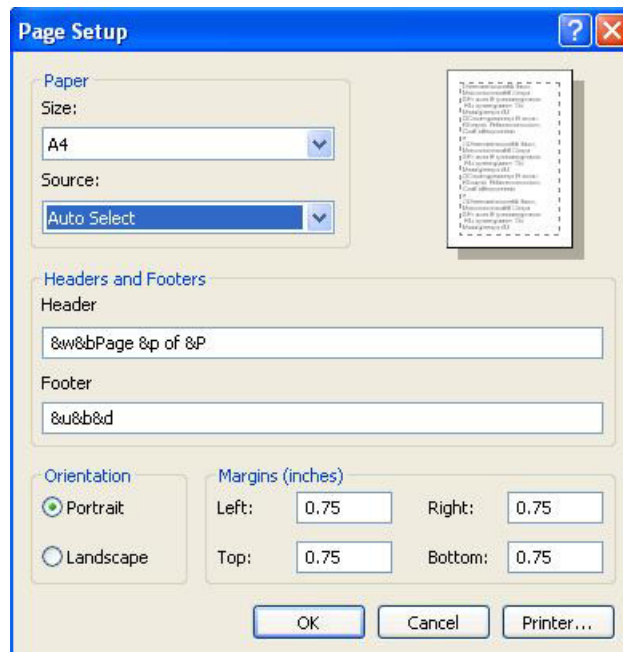
Copy & Paste

- If you require a certain portion of the judgment to use in your drafting, you do not need to type the same.
- Case Locator comes to you with Copy Paste option.
- You can copy limited characters at one time

Page Setup

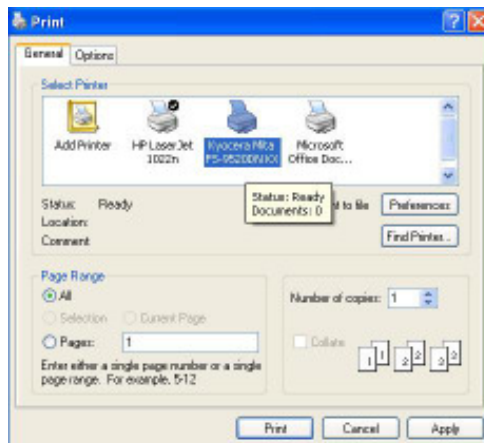


Incase a user does not want the Page No and Footer (file name etc) to be a part of the Print out, click on Page Set Up and delete the text appearing in the Header and Footer text box.



Printing

Open the document you wish to print. Make selection incase you want to print part of the document or select ALL if you wish to print the full document. Select FILE >PRINT from your browser window. The following screen appears. Select All or Selection or Current Document or Page number as the case maybe and Click On PRINT.



Terms and Conditions for use of the Manupatra Case Locator

Manupatra Case Locator on CD ROM (Case Locator) is a product made available by Manupatra Information Solutions Pvt. Ltd., a Company incorporated and duly registered under the provisions of Indian Companies Act, 1956 and having its registered office at E-192, New Rajinder Nagar, New Delhi 110 060 and Corporate Office at B-37, Floor 1A, Sector 1, NOIDA, 201301, (hereinafter referred to as "Manupatra")

The present agreement contains the terms and conditions applicable, to the use of the Product (hereinafter referred to as Case Locator) detailed as under:

1. Subject to the Terms and Conditions for the use of Manupatra Case Locator (which would mean in all comprehensiveness, materials for all future editions, issues, versions, updates, or otherwise made commercially available during the course of this agreement) which term shall mean and include user or any other third person

whosoever even remotely connected/ concerned or any direct/indirect user of the information provided by this Case Locator whether authorized or unauthorized, are granted a non-exclusive, non-transferable, revocable, limited license to access and use the Case Locator on payment of the full license fee (for initial purchase or for renewal as the case may be). Separate charges will be levied for renewal service. In addition to the product prices, the user is liable to pay any and all taxes, duties and levies which may be applicable as per law or regulation and which Manupatra may apply to the total billing of the user. It is further stated that the license for the Case Locator is hereby given to the user on a single user computer with a single Central Processing Unit (CPU), and to no more than one person at a time, except in case where a LAN version is bought by the user.

2. The user shall comply with reasonable security and care for the safe custody of the CD and shall be exclusively

responsible for keeping the CD safely. Manupatra will not be responsible in any manner whatsoever, if the CD is lost, stolen or damaged. For the purpose of this Agreement, all actions and activities performed by any person using the CD allotted to the user, shall be deemed to have been committed by the user himself, and the user shall solely be liable for the subsequent consequences.

3. Manupatra has made all reasonable efforts to ensure that the information provided on the Case Locator is accurate and the Content provided therein is on an "As Is" basis. Manupatra expressly disclaims all responsibility for any loss, injury, liability or damage of any kind resulting from and arising out of, or any way related to the Content therein and does not guarantee or warrants its accuracy, adequacy, correctness, validity, completeness or suitability for any purpose. To the maximum extent permitted by applicable law and under no circumstances shall Manupatra be liable

for any direct, incidental, special or consequential loss or damage that results from the users/ non users use, inability to use the product or users/ non user's reliance on or use of information provided by the Case Locator. Further, material or information contained on or made available through the Case Locator is not intended to and does not constitute legal advice nor does it, in any manner establish a client - advocate relationship.

4. Manupatra reserves the right to modify the terms and conditions including the prices, from time to time, as may be reasonably required which includes the right to introduce revised rates. Though Manupatra will take all reasonable efforts, it shall not be liable or responsible, directly or remotely, in any manner whatsoever, whether under law or equity, for any delays, defaults or interruptions in the performance of the Service.
5. Content or information available on the Manupatra Case Locator is protected by the Copyright Act and the intellectual

property in the said product (including all trademarks, service marks, logos, together with all transactions, adaptations, deprivations and combinations thereof, including all goodwill associated therewith and all applications layouts and specifications) vests solely and exclusively with Manupatra.

6. Certain information and data made available by Manupatra are the intellectual property of the content providers and are identified as such. Manupatra has been licensed by the content providers to store, catalogue and distribute this information to its users. The information and data are protected by copyright and other intellectual property laws and no such right is deemed to have been transmitted by this arrangement to the user. As described elsewhere, the user has obtained only the limited right to use, in the manner set out earlier, the information provided hereunder.
7. The Content on the Case Locator is for personal use only and not for commercial exploitation. You shall not decompile,

reverse engineer, disassemble, rent, lease, loan, sell, sub-license, or create derivative works from the Case Locator or the Content. You shall not copy, modify, reproduce, republish, distribute, display, or transmit for commercial, non-profit or public purposes all or any portion of the Case Locator, except to the extent permitted above. The User shall not use or otherwise export or re-exports the Case Locator or any portion thereof, the Content or any software available, on or through the Case Locator in violation of the export control laws and regulations of India.

8. Any unauthorized use of the Case Locator or its Content is strictly prohibited and will amount to immediate termination of services provided under the present agreement and may also result in both a civil claim for damages and criminal prosecution.
9. This agreement embodies the entire agreement between the parties with respect to the subject matter of this agreement and supersedes any prior negotiation, arrangement, understanding

or agreement with respect to the subject matter or any term of this Agreement.

10. The Case Locator functions by using the dongle/ Hardware lock for authentication. There are two types of Dongle Type - Printer Port Dongle and USB Port Dongle. To access Manupatra Case Locator products, the Dongle needs to be inserted at the correct port. It is recommended that the Manupatra service engineer install the Case Locator. Manupatra shall in no way be responsible for the servicing and maintenance of the machine.
11. The user is recommended to follow the instructions as laid down in the user manual handed over along with the Case Locator compulsorily as Manupatra shall neither bear any responsible nor liability for any action carried out by the user in contravention of any instruction as given in the said user manual.
12. A limited Warranty is granted to repair and replace any defective CD within 3 months from the date of purchase. This Warranty is void if the failure has resulted from

accident, tampering or misuse whether intentional or unintentional. The CD is activated by a "Hardware Lock (dongle) system". It is recommended Manupatra service engineer installs the CD. Thereafter, Manupatra is in no way responsible for the servicing and maintenance of the machine. Manupatra will also not be responsible for any action carried by the subscriber in contravention of any instruction given in the user manual as here in provided along with the product suite. Incase the machine's Hard Disk Drive is reformatted or accidentally the contents of Manupatra are deleted warranting fresh installation, No compensation is payable for the period the product is not in use for any reason whatsoever.

13. The Hardware lock (Dongle) system has to be used as instructed by Manupatra service engineer. In event of damage or misplacement of the Hardware lock (Dongle) system the subscriber will have to bear the cost of replacement of the dongle. The charges for the same would be: (a) For

damaged/broken dongle: It has to be returned back along with set of CD's issued with it. The user needs to pay Rs. 1500/- for replacement. (b) For Lost dongle: Full amount has to be paid towards fresh set. This is subject to change as per Manupatra Policy. In no event will Manupatra be liable for any damages whether in contract or in tort that may be caused by the Hardware lock (Dongle) system.

14. The Terms and Conditions of use are governed by and construed in accordance with the Indian Law and any action arising out of, or relating to these terms shall be subject to the exclusive jurisdiction of the. Appropriate Courts at New Delhi only and the User hereby consent and submit to the personal jurisdiction of such courts for the purpose of litigating any such action.
15. Notwithstanding anything contained herein, either party shall be entitled forthwith to terminate this usage agreement. In case of Manupatra terminating this agreement, it may forthwith discontinue the users right to renewal.

